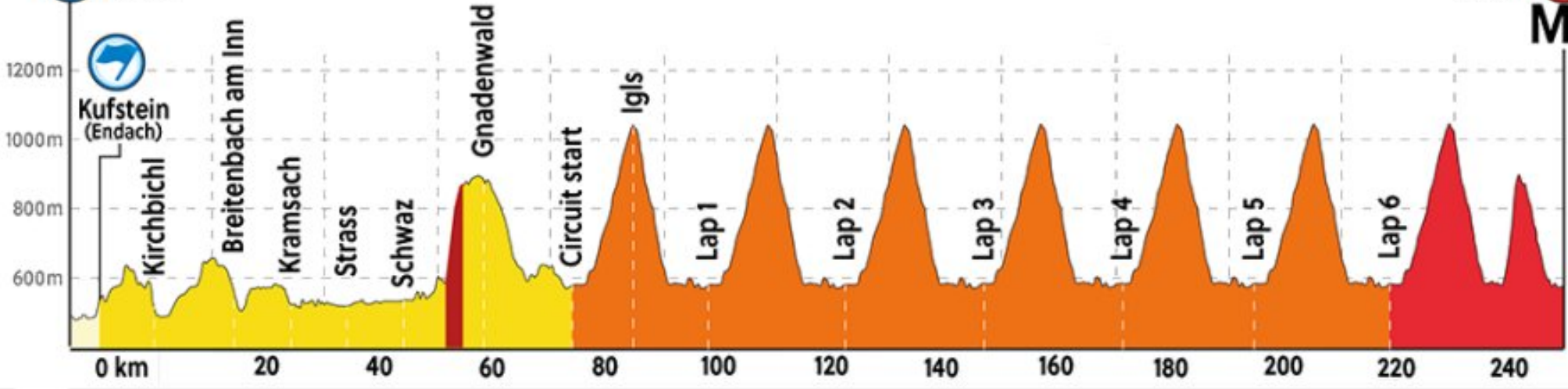
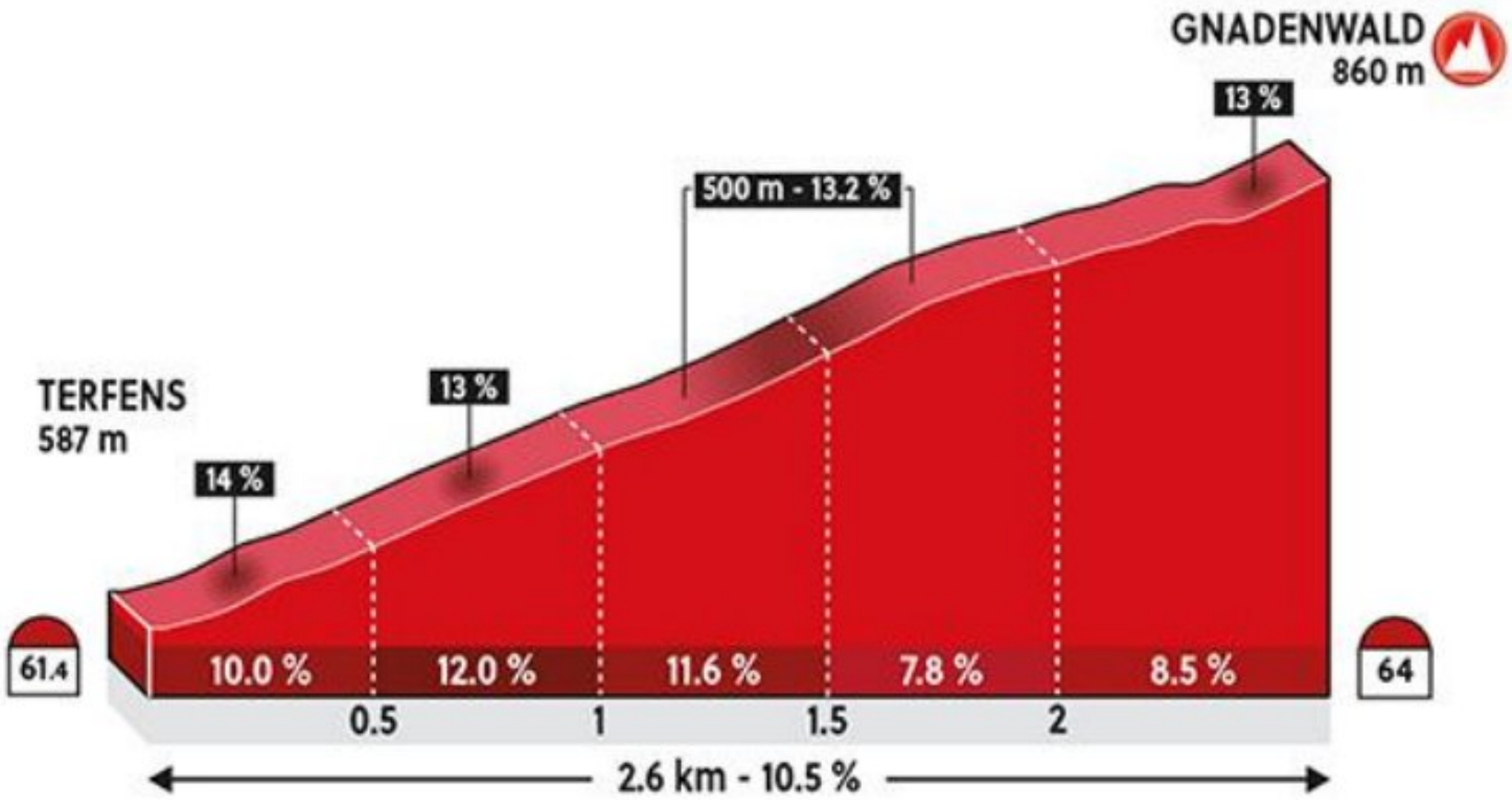




 **KUFSTEIN**
493 m

INNSBRUCK
582 m 





IGLS
1039 m



Lans

400 m - 9.8%

10 %

Aldrans

INNSBRUCK
591 m

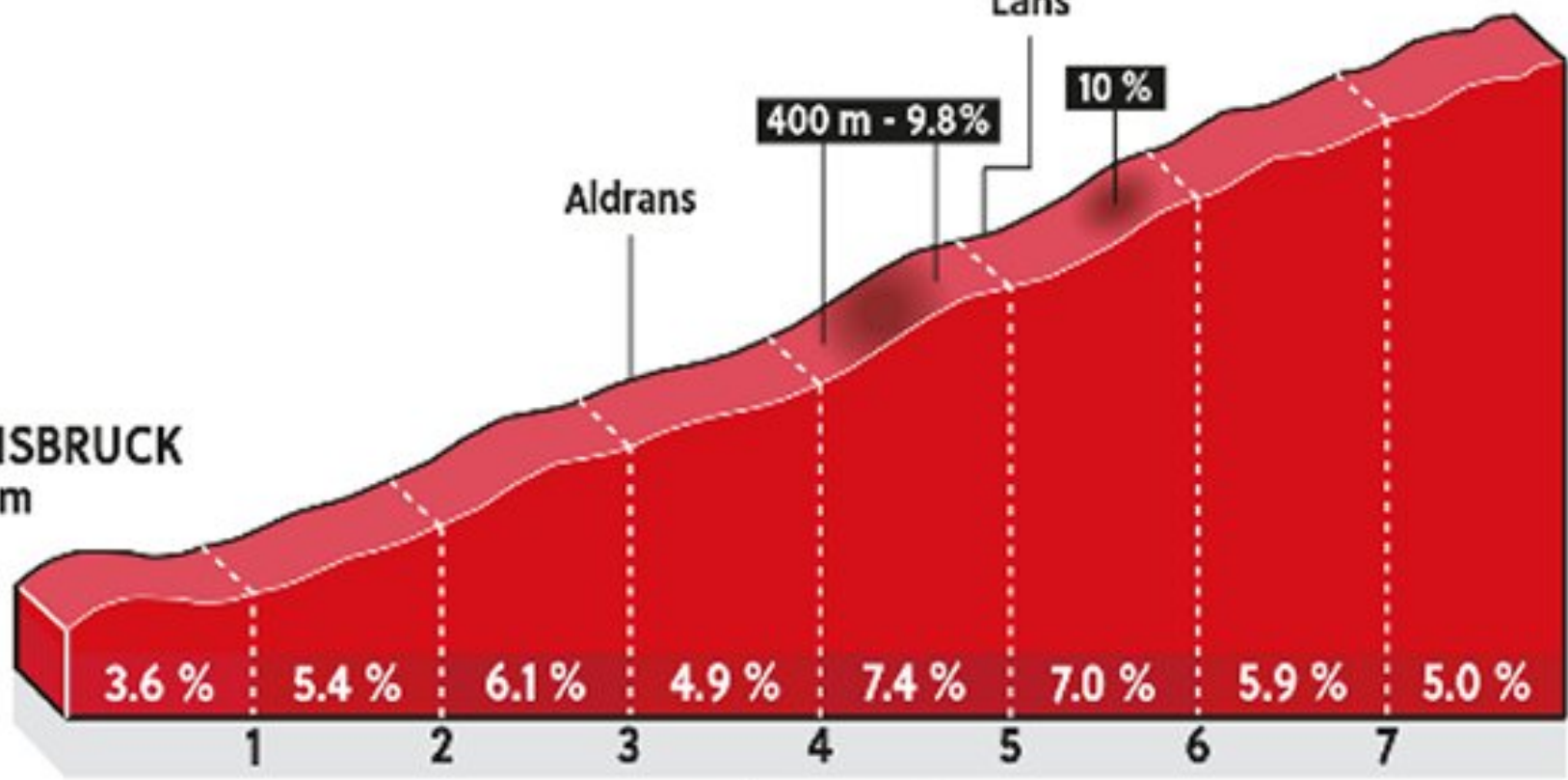
2.7

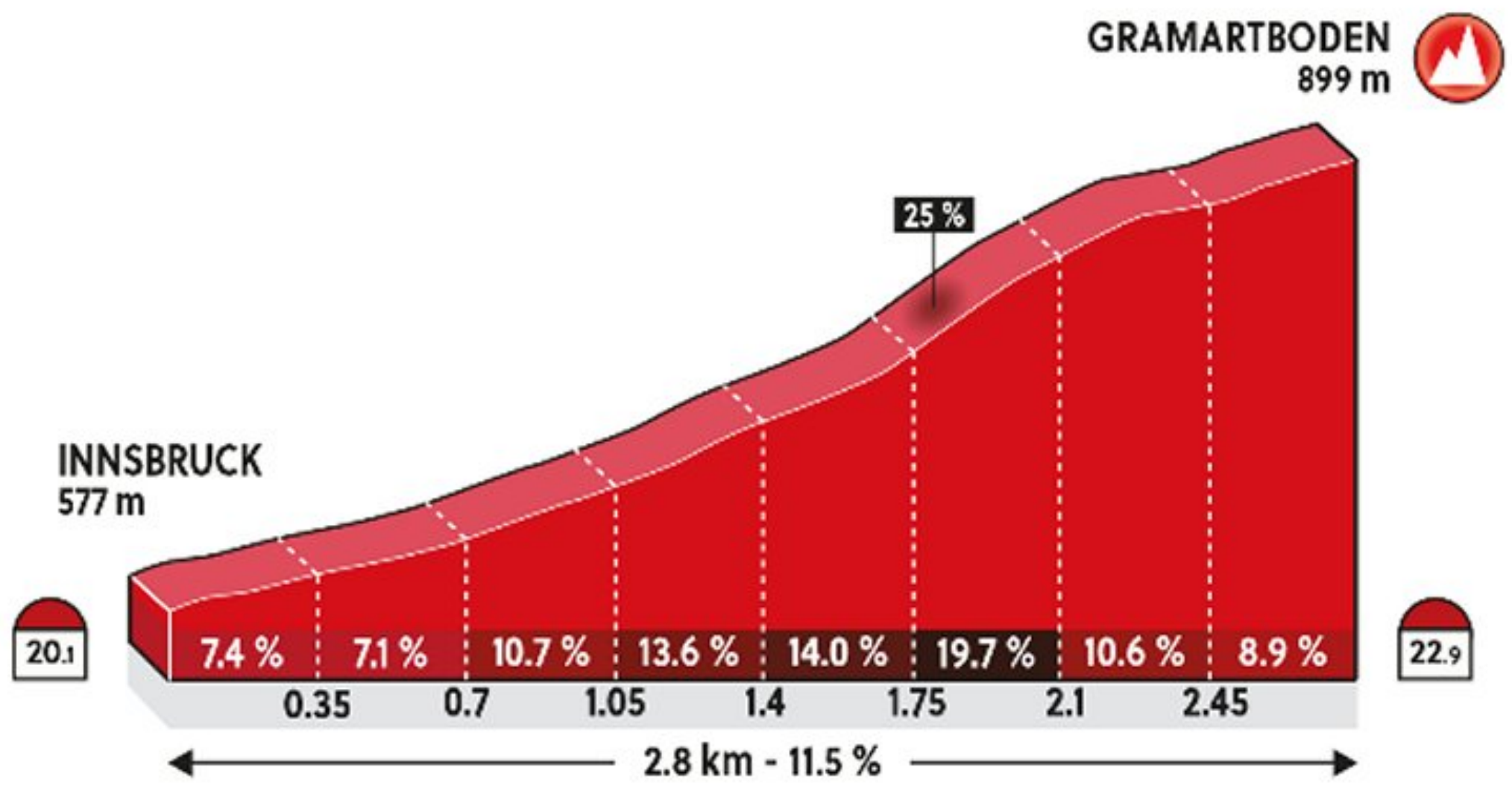
10.6

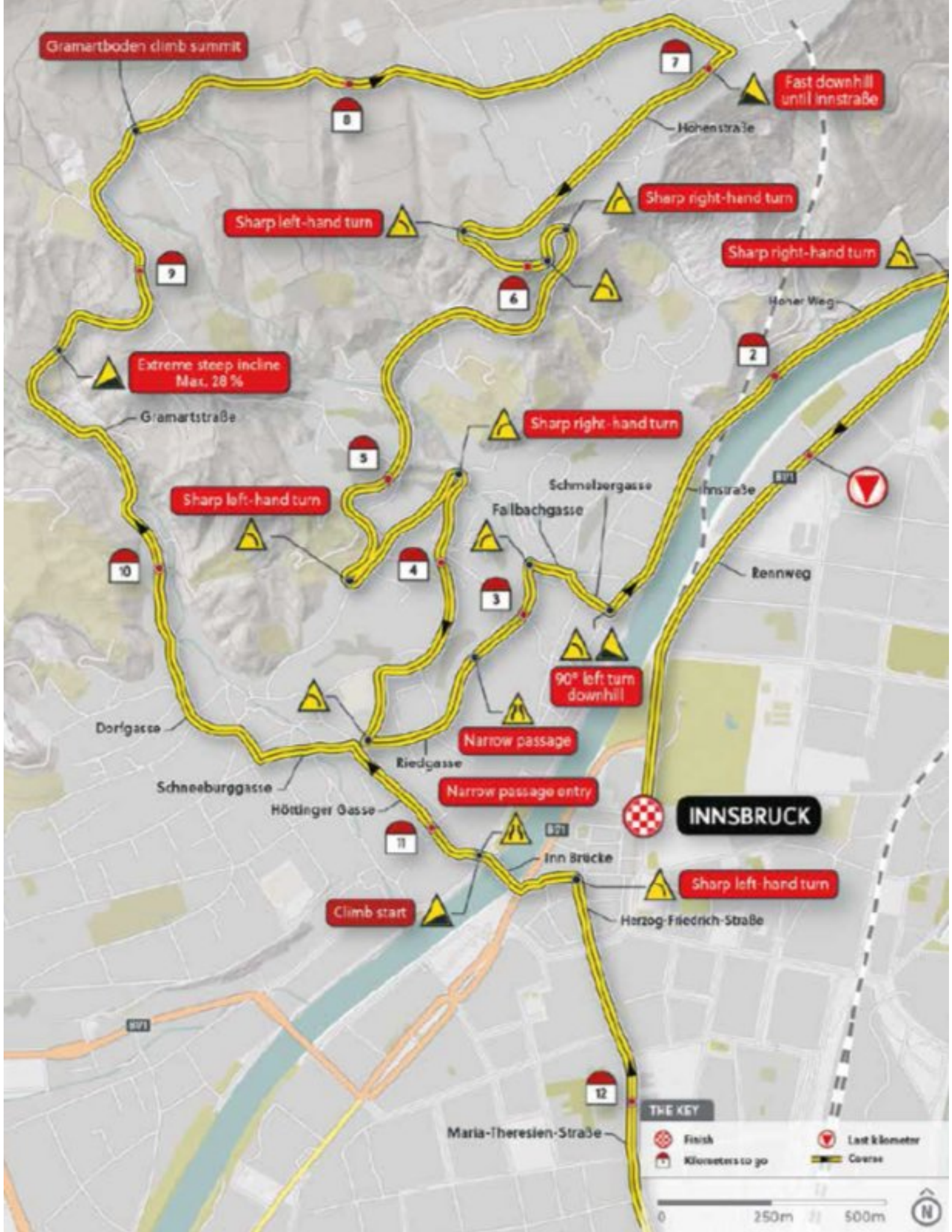
3.6 % 5.4 % 6.1 % 4.9 % 7.4 % 7.0 % 5.9 % 5.0 %

1 2 3 4 5 6 7

7.9 km - 5.7 %







Gramartboden climb summit

Fast downhill until Innstraße

Sharp left-hand turn

Sharp right-hand turn

Sharp right-hand turn

Extreme steep incline
Max. 28%

Sharp right-hand turn

Sharp left-hand turn

90° left turn
downhill

Narrow passage

Narrow passage entry

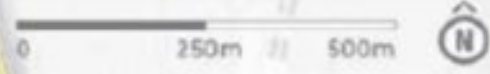
INNSBRUCK

Sharp left-hand turn

Climb start

THE KEY

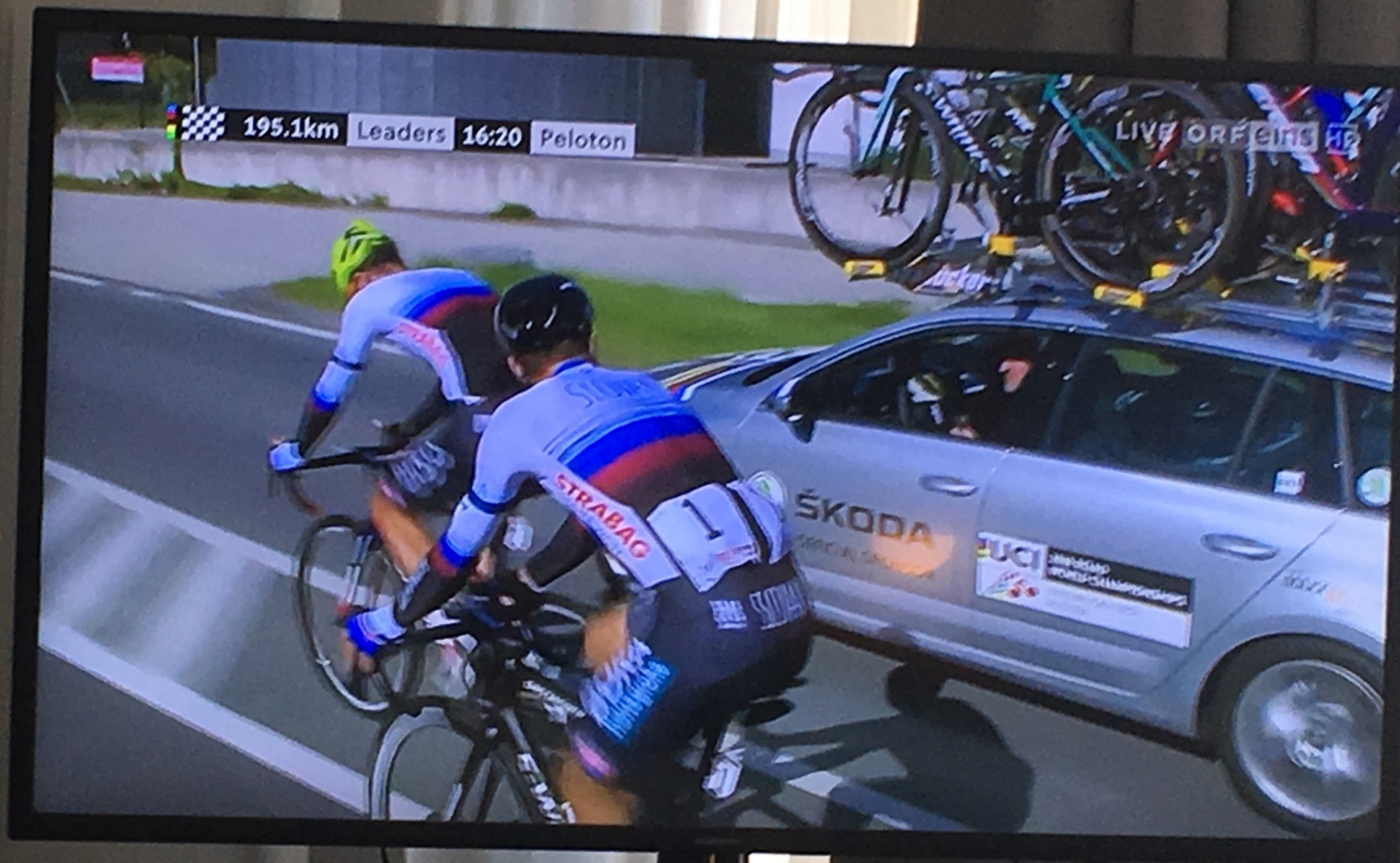
-  Finish
-  Kilometers to go
-  Last kilometer
-  Course





LIVE ORF eins HD





195.1km Leaders 16:20 Peloton

LIVE ORIGIN HP

STRABAG

ŠKODA

UCI
2015 ŠKODA
WORLD CHAMPIONSHIPS









ALUCA®







HÖLL YEAH
EVEN HARDER
THAN HELL!
28%



30

Pasthof
BRÜCKE

